

## Social Monitoring Report for the Year 2024:

In order to meet the requirement of Indicator 3.3.2, Indicator 4.4.1 and Indicator 8.2.1 under Malaysian Criteria and Indicators for Forest Management Certification, MC&I SFM (MTCS:1002:ST:2021), the FMU had conducted social visit and monitoring to longhouses within and/or adjacent to our FMU under Forest Timber Licence T/3401 (STIDC).

We managed to visit all 18 longhouses within and/or adjacent to our FMU. Land cruiser and boat were used as transportation to reach all the longhouses where applicable.

The objectives of our visit are:

- (i.) To inform, explain and provide better understanding about Sustainable Forest Management (SFM) and MC&I SFM (MTCS ST 1002:2021) to longhouse people ;
- (ii.) To inform and explain for the FMU undergoing Forest Management Certification.
- (iii.) To explain on function of Community Representative Committee (CRC) to the longhouse people.
- (iv.) To inform and explain on High Conservation Value Forest (HCVF) and Endangered, Rare and Threatened (ERT) of Fauna and Flora within our FMU.
- (v.) To inform on summary of Social Impact Assessment (SIA) and Environmental Impact Assessment (EIA) to the longhouse people.
- (vi.) To inform, explain and provide better understanding regarding Conflict Resolution Process Flow/Complaint Form and
- (vii.) To update the followings:
  - a. Impact on household income.
  - b. Locality and preventive action on significant important area (burial ground and water intake).
  - c. Disturbance on riverbank.
  - d. Road maintenance and road safety.
  - e. Land status (The Native Communal Reserve (Agriculture)).
  - f. Engagement with local community (road maintenance to the longhouses).

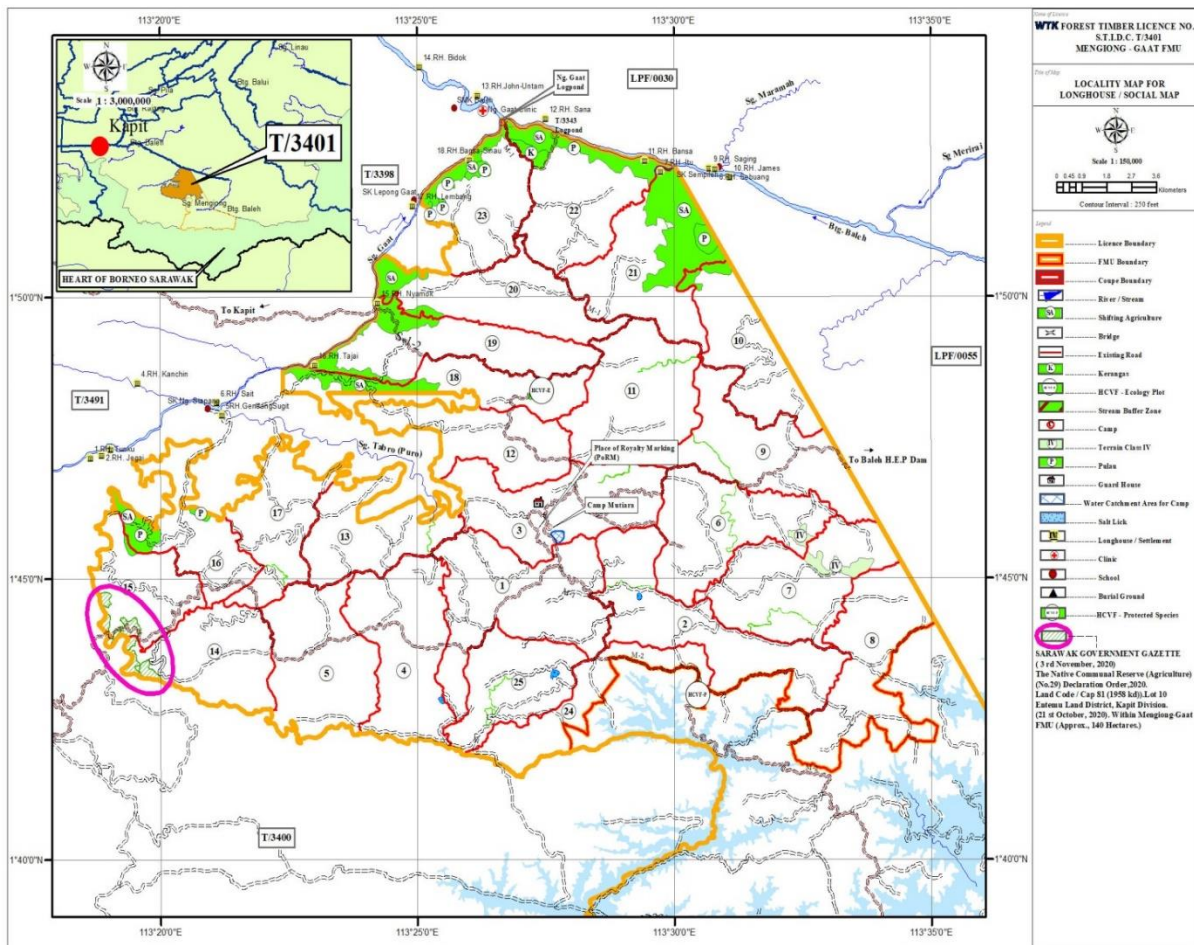
We managed to achieve our objectives during our visited and had duly explained to each longhouse about our SIA, SFM, Complaint Form, HCVF, ERT of Fauna and Flora, Job opportunities, EIA and the use of complaint form provided by our FMU.

We have distributed the related posters of ERT species for both Flora and Fauna, complaint form and information on CRC (simplified explanation in *Bahasa Melayu* and *Bahasa Iban* language) to each of all the longhouses we visited.

Dialogued with the longhouse at *Rumah Tunku*, the local communities had received the Government Gazette for Native Communal Reserve (Agriculture) in year 2020 with that their

Native Communal Reserve (Agriculture) was under declaration order 2020 defined as ‘Entemu’ Land District dated 21<sup>st</sup>, October 2020. Moreover, this Native Communal Reserve (Agriculture) was mostly located inside the previous forest timber license area of T/3401 but declared as exclusive area for certification purposes and partially inside the Mengiong-Gaat FMU area covering Approximate 140 hectares in Coupes 14 and 15 (Coupe 14 in Coupe Year 2034/2035 and Coupe 15 in Coupe Year 2035/2036). Refer to declaration letter dated 21<sup>st</sup> October, 2020 and social monitoring map as attached below.

### Social Monitoring Map



## 1.1 Analysis based on the Social Monitoring Questionnaire Survey Form:

Appended hereinbelow the analysis report based of the social monitoring questionnaire survey form responded by the local communities that:

- a) they do not have impact on household income with timber harvesting certification.
- b) they do not face any locality and preventive action on significant important area for recently timber harvesting activities because the timber harvesting Coupe 1A and 2A was not falling inside their “*Temuda*” land area where they are carrying out shifting agriculture.
- c) they do not have any idea on the disturbance on the riverbank because these timber harvesting were under the reduced impact logging (RIL) system where all stream buffer zone were not be disturbed or entered by the logging machineries. Moreover, their gravity feed water supply/catchment areas were not falling inside the active coupes 1A and 2A but they are mostly located inside their “*Temuda*” land area where no Permit to Enter Coupe (PEC) was issued by the forest department.
- d) they are using timber logging roads as accessible to their longhouses where there is no major problem during these dry period season where the logging roads were good and accessible to their longhouses easily but local communities are still worry about the logging roads in the wet season when there is lack of roads maintenance by the management of logging timber company. Moreover, the signage/sign board for the uses of logging harvesting were fully erect up in designated areas.
- e) the Native Communal Reserve (Agriculture) lands situated at *Rumah Tunku*, Sungai Sebila, and Sungai Gaat, Kapit containing described as ‘Entemu’ Land District by Sarawak Government Gazette under the ‘Entemu’ land District dated 21<sup>st</sup>, October 2020. This piece of lands (approximate 140 hectares) is located in partial Coupe 14 and 15 of General Harvesting (GP) as approved.
- f) engagement with local community found that roads maintenance/accessible to the longhouses was very important to the local communities. The Sarawak Energy Berhad (SEB) roads to ‘Putai’ Hydro Electric Power Dam was almost navigable by all public users and local communities who were dwelling upstream areas.

In conclusion, we managed to reach better understanding with longhouses people on SFM and have received positive feedback from most of longhouses such as 1. Rh. Jegai, 2. Rh. Melintang, 3. Rh. Tunku, 4. Rh. Gendang, 5. Rh.Sait, 6. Rh.Kalat (formerly as Rh. Itu), 7. Rh. Bansa, 8. Rh. Sana, 9. Rh.John, 10. Rh. Kenedy, 11. Nyamok, 12. Lembang and 13. Rh. Tajai through the dialogue questionnaire survey form responded by the local communities.